



Oldbury Observer Autumn Term 2025 edition 13 CLUBS SPECIAL

Mr Irving's Comment

A quick note of thanks to the staff who were able to offer an extra-curricula club this term and to Ms Condon, Mrs Carter and Miss Horne who take care of the administration of these. Whether learning a new skill, making new friends or simply wanting to be busy, our after school clubs offer a range of experiences and cater for a broad variety of interests - as this issue of the Observer illustrates. We encourage anyone who has not yet attended a club to consider getting involved at some point this year.

CTA Christmas Fayre



The Week Ahead

Thursday 11th December- Y3/4 Choir trip to the Guildhall

Friday 12th December - Christmas Jumper Day and CTA Christmas Fayre

School Dates

Monday 15th December - EYFS/KS1 Christmas Performance (more info to follow)

Tuesday 16th December - EYFS/KS1 Christmas Performance (more info to follow)

Tuesday 16th December - Year 5 to the University of Worcester to sing carols.

Wednesday 17th December - Y3/4 Christmas Performance (more info to follow) & Y5/6 Carol Concert (more info to follow)

Thursday 18th December - Y3/4 Christmas Performance (more info to follow)

Friday 19th December - Christmas Holidays begin!

Term Dates

Academic Year 2025 to 2026

Term dates Academic Year 2025 to 2026		
Holiday	School closes on	School re-opens on
Autumn Term	Not Applicable	Monday 1 September 2025
Autumn mid-term	Friday 24 October 2025	Monday 3 November 2025
Christmas	Friday 19 December 2025	Monday 5 January 2026
Spring mid-term	Friday 13 February 2026	Monday 23 February 2026
Easter	Friday 27 March 2026	Monday 13 April 2026
Summer mid-term	Friday 22 May 2026	Monday 1 June 2026
End of summer term	Monday 20 July 2026	Not Applicable

Academic Year 2026 to 2027

Term Dates for Community and Voluntary Controlled Schools for the academic year 2026 to 2027.

Holiday	School closes on	School re-opens on
Autumn Term	Not applicable	Tuesday 1 September 2026
Autumn mid-term	Friday 23 October 2026	Monday 2 November 2026
Christmas	Friday 18 December 2026	Monday 4 January 2027
Spring mid-term	Friday 12 February 2027	Monday 22 February 2027
Easter	Thursday 25 March 2027	Monday 12 April 2027
Summer mid-term	Friday 28 May 2027	Monday 7 June 2027
End of summer term	Wednesday 21 July 2027	Not applicable

Attendance Update - **IMPORTANT for ALL FAMILIES**

This week, we have noted an upturn in attendance from last week which is good news given the amount of sickness, high temperatures and colds we have been seeing. It also bucks the trend of the last few years where attendance has steadily gone down week after week until Christmas. With so many exciting events and learning opportunities to look forward to, we hope to see as many children as possible in school over the last 2 weeks. Despite other things happening, there are still important lessons taking place and all of the children will have a key part to play in the rehearsals of the various productions and Christmas concerts that are going on.

Current whole school attendance - 96.08

Current percentage who are persistently absent (10% or more missed sessions) - 12.02%

Years 5 & 6 Christmas Concert



CLUBS, CLUBS AND MORE CLUBS

At Oldbury Park we support our children to access a wide range of clubs and enrichment. Please scroll down to see some of what has been on offer, from Spanish to Dancing and all that's in between.

Lego Club

This was our great after-school space where KS1 pupils explored engineering and design through LEGO. We worked small teams, the children planned, built, tested their ideas, this boosted their problem-solving, fine motor skills, oracy and resilience. No prior LEGO experience was needed—just their curiosity and collaboration. This was part of our Enrichment Guarantee for rich, hands-on learning.





Boardgame Club

This term in board games club the children have really enjoyed learning some new games and loved playing others that they already knew. They have worked cooperatively by taking turns, sharing and having fun!





Chess Club

Chess Club this term has seen complete beginners being taught the game by children who could already play and intermediate players learning the more nuanced moves from the most experienced children.

It has been a great opportunity for everyone to interact with children from different year groups and to build on problem-solving, resilience and communication skills. Those that wanted to, took part in a tournament in the final few weeks. They all showed great sportsmanship both in losing and winning.

Despite her best efforts, Mrs Blasdale never managed to beat any of the children who challenged her to a match – although often they hadn't realised they'd beaten her until she pointed it out to them!





Gotta Dance

On Tuesday 11th November, 17 Year 6 children went to Redditch to take part in Redditch Gotta Dance. After rehearsing their dance, The Greatest Show, at dance club since September, they took to the stage at Redditch Palace Theatre in front of a live audience. They performed alongside lots of other dance groups who were mostly from dance schools in the local area. Our children were amazing! They performed with great energy, personality

and worked so well as a team. They really did sparkle on stage and we were all incredibly proud of them.



Clay Club

Year 3 and 4 pupils created some stunning clay works of art over 10 weeks. We then held an exhibition for staff and parents, where everyone was overwhelmed by the beautiful work on show.





Debutots

Here are some of our younger children enjoying exploring drama through stories at our very popular Debutots offer.





Debutkids

Here are some of our Ks2 children enjoying furthering their creative flare for the dramatic in our popular Debutkids club.



JH Football

Getting sporty at JH Football club on Monday, and enjoying every moment.



Free Jumper Hub

Firstly, we would like to thank everyone who has donated pre-loved uniform over the last 3 years. However, as we further develop the exciting and dynamic uses of spaces within school, we are no longer in the position to store the vast amount of school uniform donated.

Therefore moving forward, please only donate pre-loved school jumpers, in good condition, to staff within school. We will then ensure we provide opportunities for parents to access these as often as possible. Thank you for your support.





If your child has outgrown their school shoes and they are in good condition please donate these and we will ensure they are given to families or children in need.

Choir Club

Children from Year 3 and 4 have been taking part in the choir club on a Thursday lunch time for this Autumn term. We started the term by singing some silly songs such as 'Dang-A-Rang-A-Dang Do' and 'The Flea Song' before practising our Christmas songs ready for our performance at The Guild Hall next week. We have some classics, such as 'White Christmas' and 'Jingle Bells', and more modern takes such as 'Sparkle and Shine' and 'Christmas Calypso'. The children have been brilliant and we cannot wait to show how glorious singing to others!



STEM SCIENCE COMPETITION- By The Hive

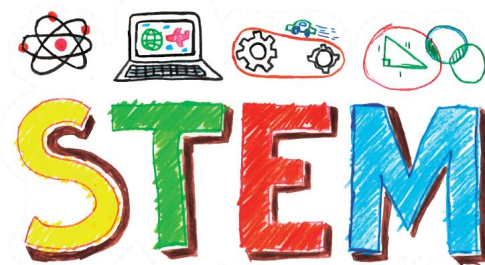
  Calling all young STEM enthusiasts!!   We are excited to announce a special competition aimed at children aged 7-14. Participants are asked to design an all-terrain vehicle that can cover water, deserts, jungles and maybe even the moon!

Plans must include: - An annotated drawing including at least 6 technical features - A detailed description of the vehicle

The grand prize is a Lego Land Rover Defender, donated by Listers Land Rover Droitwich. Entries to be delivered to The Hive between Friday 2nd January and Sunday 18th January. The winner will be announced at STEAMfest on Saturday 24th January.

3D models will be accepted alongside a written plan but are not essential. If included, they must fit inside a shoebox. Entry forms can be collected from The Hive.

HIVE



MAB

On the farm: We enjoyed making chocolate bark this week as an early Christmas treat, and carried out our usual farm tasks.













Fun in forest school







Contact Us



If you wish to get in touch with the school, please use the following details:

Oldbury Park Primary School

Oldbury Road Worcester WR2 6AA

01905 424878

office@oldburypark.worcs.sch.uk <http://www.oldburypark.worcs.sch.uk/>

Phase email addresses:

For ALL parents, we have set up a new way of contacting Phase Leaders. These email addresses are SOLELY for classroom, pastoral and academic enquiries and NOT for general enquiries which should still come through the office@ email address.

Children in Reception eyfsparents@oldburypark.crst.org.uk (Miss Molloy)

Children in Years 1 & 2 KS1parents@oldburypark.crst.org.uk (Mrs Marks)

Children in Years 3 & 4 LKS2parents@oldburypark.crst.org.uk (Miss Moule)

Children in Years 5 & 6 UKS2parents@oldburypark.crst.org.uk (Mr Williams)

SENDco Enquiries office@oldburypark.crst.org.uk (FAO: Miss Miller)